



ELK Biotechnology

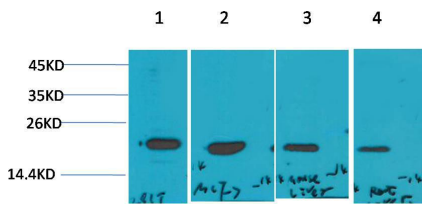
P21 Rabbit pAb

Catalog NO.: EA236

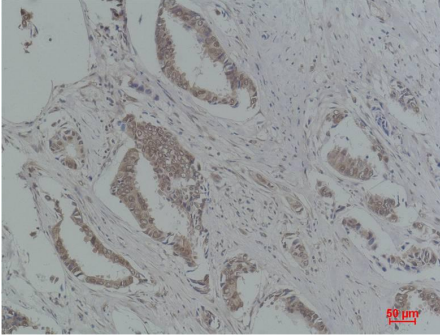
For research use only.

Overview

Product name	P21 Rabbit polyclonal antibody
Source	Rabbit
Applications	WB, IHC
Species reactivity	Human, Rat, Mouse
Recommended dilutions	WesternBlot:1/1000-2000 Immunohistochemistry:1/100-200 NOTE: Optimal dilutions should be determined by the end user.
Immunogen	Recombinant Protein
Species	Human
Storage	PBS with 0.02% sodium azide and 50% glycerol pH 7.4. Store at -20° C. Avoid repeated freeze-thaw cycles.
Isotype	IgG
Clonality	Polyclonal
Concentration	1 mg/ml
Observed band	21kDa
GenelD (Human)	1026
Human Swiss-Prot No.	P38936
Cellular localization	Cytoplasm, Nucleus
Alternative Names	CDKN1 antibody, CDKI antibody, CDKN1A antibody, MDA 6 antibody, p21 cip1 antibody, p21waf antibody
Background	p21 / WAF1 / CIP1 also known as cyclin-dependent kinase inhibitor 1 or CDK-interacting protein 1 is a protein that in humans is encoded by the CDKN1A gene. p21 is a potent cyclin-dependent kinase inhibitor (CKI). The p21 (CIP1/WAF1) protein binds to and inhibits the activity of cyclin-CDK2, - CDK1, and -CDK4/6 complexes, and thus functions as a regulator of cell cycle progression at G1 and S phase.



Western blot analysis of 1) 293T, 2)MCF7, 3)Mouse Liver Tissue, 4) Rat Liver Tissue with P21 Rabbit pAb EA236 diluted at 1:2,000.



Immunohistochemical analysis of paraffin-embedded Human Breast Carcinoma using P21 (EA236) Rabbit pAb diluted at 1:200.