



ELK Biotechnology

Smad2 Rabbit pAb

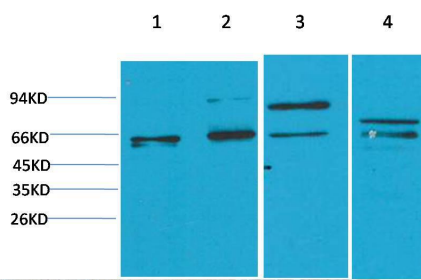
Catalog NO.: EA241

For research use only.

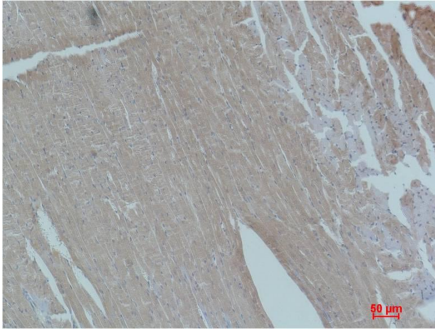
Overview

Product name	Smad2 Rabbit polyclonal antibody
Source	Rabbit
Applications	WB, IHC
Species reactivity	Human, Rat, Mouse
Recommended dilutions	WesternBlot:1/1000-2000 Immunohistochemistry:1/100-200 NOTE: Optimal dilutions should be determined by the end user.
Immunogen	Recombinant Protein
Species	Human
Storage	PBS with 0.02% sodium azide and 50% glycerol pH 7.4. Store at -20° C. Avoid repeated freeze-thaw cycles.
Isotype	IgG
Clonality	Polyclonal
Concentration	1 mg/ml
Observed band	60kDa
GenelD (Human)	4087
Human Swiss-Prot No.	Q157976
Cellular localization	Cytoplasm, Nucleus
Alternative Names	hMAD2 antibody, JV18 antibody, MAD antibody, MADH2 antibody, MGC22139 antibody
Background	SMAD2 is a protein that in humans is encoded by the SMAD2 gene. SMAD proteins are signal transducers and transcriptional modulators that mediate multiple signaling pathways. SMAD2 mediates the signal of the transforming growth factor (TGF)-beta, and thus regulates multiple cellular processes, such as cell proliferation, apoptosis, and differentiation. This protein is recruited to the TGF-beta receptors through its interaction with the SMAD

anchor for receptor activation (SARA) protein.



Western blot analysis of 1) HeLa, 2) Jurkat, 3) C2C12, 4) PC12 with Smad2 Rabbit pAb EA241 diluted at 1:2,000.



Immunohistochemical analysis of paraffin-embedded Mouse Heart Tissue using Smad2 (EA241) Rabbit pAb diluted at 1:200.