



# ELK Biotechnology

S100 Rabbit pAb

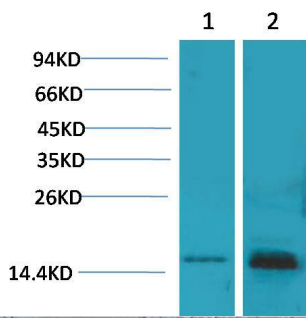
Catalog NO.: EA253

For research use only.

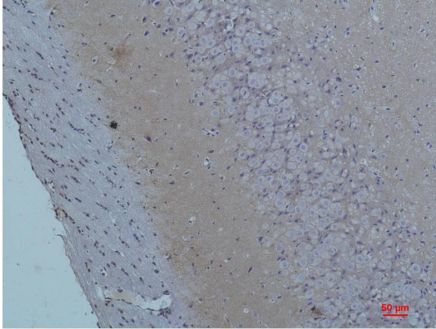
## Overview

---

Product name	S100 Rabbit polyclonal antibody
Source	Rabbit
Applications	<b>WB, IHC</b>
Species reactivity	<b>Human, Rat, Mouse</b>
Recommended dilutions	<b>WesternBlot:1/1000-2000</b> <b>Immunohistochemistry:1/50-100</b> <b>NOTE: Optimal dilutions should be determined by the end user.</b>
Immunogen	Recombinant Protein
Species	Human
Storage	PBS with 0.02% sodium azide and 50% glycerol pH 7.4. Store at -20° C. Avoid repeated freeze-thaw cycles.
Isotype	IgG
Clonality	Polyclonal
Concentration	1 mg/ml
Observed band	<b>15kDa</b>
GenelD (Human)	6271
Human Swiss-Prot No.	P23297
Cellular localization	Cytoplasm
Alternative Names	Bpb antibody, NEF antibody, protein S100-A1 antibody
Background	The S100 proteins are a family of low-molecular-weight proteins found in vertebrates and characterized by two calcium-binding sites that have helix-loop-helix ("EF-hand type") conformation.



Western blot analysis of 1) 293T, 2) Mouse Brain Tissue with S100 Rabbit pAb EA253 diluted at 1:2,000.



Immunohistochemical analysis of paraffin-embedded Rat Brain Tissue using S100 (EA253) Rabbit pAb diluted at 1:200.