



ELK Biotechnology

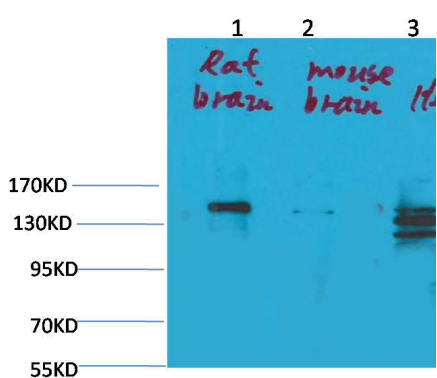
SLC12A4 Rabbit pAb

Catalog NO.: EA303

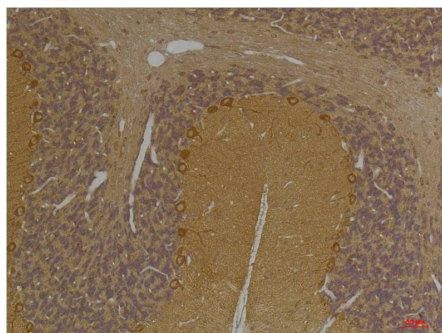
For research use only.

Overview

Product name	SLC12A4 Rabbit polyclonal antibody
Source	Rabbit
Applications	WB, IHC
Species reactivity	Human, Rat, Mouse
Recommended dilutions	WesternBlot:1/1000-2000 Immunohistochemistry:1/100-200 NOTE: Optimal dilutions should be determined by the end user.
Immunogen	Synthetic Peptide
Species	Human
Storage	PBS with 0.02% sodium azide and 50% glycerol pH 7.4. Store at -20° C. Avoid repeated freeze-thaw cycles.
Isotype	IgG
Clonality	Polyclonal
Concentration	1 mg/ml
Observed band	150kDa
GeneID (Human)	6560
Human Swiss-Prot No.	Q9UP95
Cellular localization	Membrane
Alternative Names	Electroneutral potassium chloride cotransporter 1,hKCC1,KCC1, s12A4,FLJ40489
Background	Mediates electroneutral potassium-chloride cotransport when activated by cell swelling. May contribute to cell volume homeostasis in single cells.



Western blot analysis of 1) Rat Brain Tissue, 2) Mouse Brain Tissue, 3) HeLa with SLC12A4 Rabbit pAb EA303 diluted at 1:2,000.



Immunohistochemical analysis of paraffin-embedded Rat Brain Tissue using SLC12A4 (EA303) Rabbit pAb diluted at 1:200.



Immunohistochemical analysis of paraffin-embedded Mouse Brain Tissue using SLC12A4 (EA303) Rabbit pAb diluted at 1:200.