



# ELK Biotechnology

NM23A Rabbit pAb

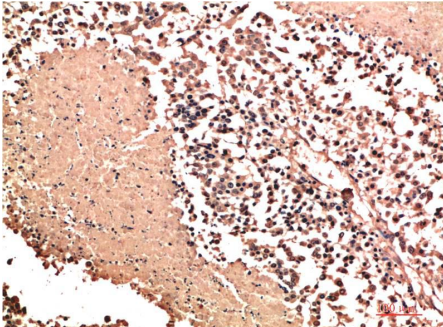
Catalog NO.: EA322

For research use only.

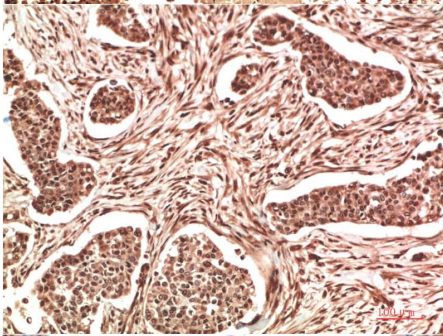
## Overview

---

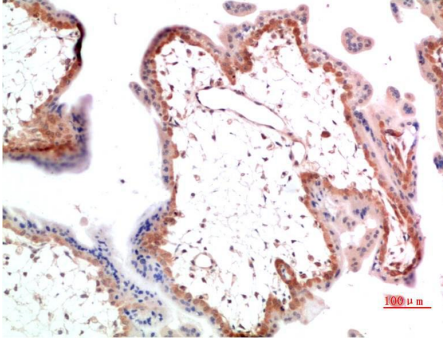
Product name	NM23A Rabbit polyclonal antibody
Source	Rabbit
Applications	IHC
Species reactivity	Human, Rat, Mouse
Recommended dilutions	Immunohistochemistry:1/200-500 <b>NOTE: Optimal dilutions should be determined by the end user.</b>
Immunogen	Recombinant Protein
Species	Human
Storage	PBS with 0.02% sodium azide and 50% glycerol pH 7.4. Store at -20° C. Avoid repeated freeze-thaw cycles.
Isotype	IgG
Clonality	Polyclonal
Concentration	1 mg/ml
Observed band	17kDa
GeneID (Human)	4830
Human Swiss-Prot No.	P15531
Cellular localization	Cytoplasm, Nucleus
Alternative Names	AWD,NME1,GAAD,NBS,NDKA,Nucleoside diphosphate kinase A antibody
Background	Members of the NDK/NME/NM23 kinase family inhibit metastasis in a variety of tumor cell types. All NDK/NME/NM23 proteins possess nucleoside diphosphatase kinase (NDK) activity and catalyze the phosphorylation of nucleoside diphosphate to the corresponding nucleoside triphosphate to regulate a diverse array of cellular events.



Immunohistochemical analysis of paraffin-embedded Human Lung Carcinoma Tissue using NM23A (EA322) Rabbit pAb diluted at 1:500.



Immunohistochemical analysis of paraffin-embedded Human Stomach Carcinoma Tissue using NM23A (EA322) Rabbit pAb diluted at 1:500.



Immunohistochemical analysis of paraffin-embedded Human Placenta Tissue using NM23A (EA322) Rabbit pAb diluted at 1:500.