



Cleaved-C1s HC (R437) rabbit pAb

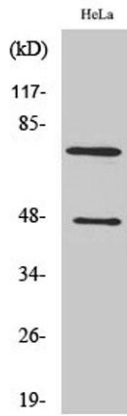
Cat No.:ES1014

For research use only

Overview

Product Name	Cleaved-C1s HC (R437) rabbit pAb
Host species	Rabbit
Applications	WB;ELISA
Species Cross-Reactivity	Human;Rat;Mouse;
Recommended dilutions	Western Blot: 1/500 - 1/2000. ELISA: 1/20000. Not yet tested in other applications.
Immunogen	The antiserum was produced against synthesized peptide derived from human C1S. AA range:388-437
Specificity	Cleaved-C1s HC (R437) Polyclonal Antibody detects endogenous levels of fragment of activated C1s HC protein resulting from cleavage adjacent to R437.
Formulation	Liquid in PBS containing 50% glycerol, 0.5% BSA and 0.02% sodium azide.
Storage	Store at -20°C. Avoid repeated freeze-thaw cycles.
Protein Name	Complement C1s subcomponent
Gene Name	C1S
Cellular localization	extracellular region,extracellular exosome,blood microparticle,
Purification	The antibody was affinity-purified from rabbit antiserum by affinity-chromatography using epitope-specific immunogen.
Clonality	Polyclonal
Concentration	1 mg/ml
Observed band	47+76kD
Human Gene ID	716
Human Swiss-Prot Number	P09871
Alternative Names	C1S; Complement C1s subcomponent; C1 esterase; Complement component 1 subcomponent s
Background	This gene encodes a serine protease, which is a major constituent of the human complement subcomponent C1. C1s associates with two other complement components C1r and C1q in order to yield the first component of the serum complement

system. Defects in this gene are the cause of selective C1s deficiency. [provided by RefSeq, Mar 2009],



Western Blot analysis of various cells using Cleaved-C1s HC (R437) Polyclonal Antibody

