



# Cleaved-Ephrin-A2 (N188) rabbit pAb

Cat No.:ES1037

For research use only

## Overview

<b>Product Name</b>	Cleaved-Ephrin-A2 (N188) rabbit pAb
<b>Host species</b>	Rabbit
<b>Applications</b>	WB;ELISA
<b>Species Cross-Reactivity</b>	Human;Mouse
<b>Recommended dilutions</b>	Western Blot: 1/500 - 1/2000. ELISA: 1/20000. Not yet tested in other applications.
<b>Immunogen</b>	The antiserum was produced against synthesized peptide derived from human EFNA2. AA range:139-188
<b>Specificity</b>	Cleaved-Ephrin-A2 (N188) Polyclonal Antibody detects endogenous levels of fragment of activated Ephrin-A2 protein resulting from cleavage adjacent to N188.
<b>Formulation</b>	Liquid in PBS containing 50% glycerol, 0.5% BSA and 0.02% sodium azide.
<b>Storage</b>	Store at -20°C. Avoid repeated freeze-thaw cycles.
<b>Protein Name</b>	Ephrin-A2
<b>Gene Name</b>	EFNA2
<b>Cellular localization</b>	Cell membrane ; Lipid-anchor, GPI-anchor .
<b>Purification</b>	The antibody was affinity-purified from rabbit antiserum by affinity-chromatography using epitope-specific immunogen.
<b>Clonality</b>	Polyclonal
<b>Concentration</b>	1 mg/ml
<b>Observed band</b>	21kD
<b>Human Gene ID</b>	1943
<b>Human Swiss-Prot Number</b>	O43921
<b>Alternative Names</b>	EFNA2; EPLG6; LERK6; Ephrin-A2; EPH-related receptor tyrosine kinase ligand 6; LERK-6; HEK7 ligand; HEK7-L
<b>Background</b>	This gene encodes a member of the ephrin family. The protein is composed of a signal sequence, a receptor-binding region, a spacer region, and a

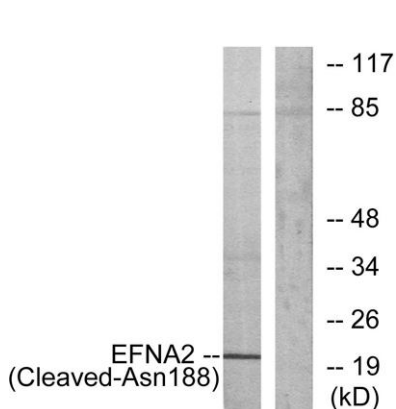




hydrophobic region. The EPH and EPH-related receptors comprise the largest subfamily of receptor protein-tyrosine kinases and have been implicated in mediating developmental events, particularly in the nervous system. Based on their structures and sequence relationships, ephrins are divided into the ephrin-A (EFNA) class, which are anchored to the membrane by a glycosylphosphatidylinositol linkage, and the ephrin-B (EFNB) class, which are transmembrane proteins. Posttranslational modifications determine whether this protein localizes to the nucleus or the cytoplasm. [provided by RefSeq, Jul 2008],



Western Blot analysis of various cells using Cleaved-Ephrin-A2 (N188) Polyclonal Antibody



Western blot analysis of lysates from 293 cells, treated with etoposide 25uM 1h, using EFNA2 (Cleaved-Asn188) Antibody. The lane on the right is blocked with the synthesized peptide.

